

# Hand Crafted Framing

## ftp Log-in for Impression Series Frames and Mats

Open your web browser and copy and paste this web address:

<http://www.anyclient.com/applet.html> into the address box.

Single left click the Connect Button at the bottom of the page.

A new window named Connect should have opened.

Single left click the New Button at the bottom of this new window.

The name Newsite will be highlighted in grey. Type the name HCF FTP

Single left click in the box next to Host. Type in 70.155.69.218

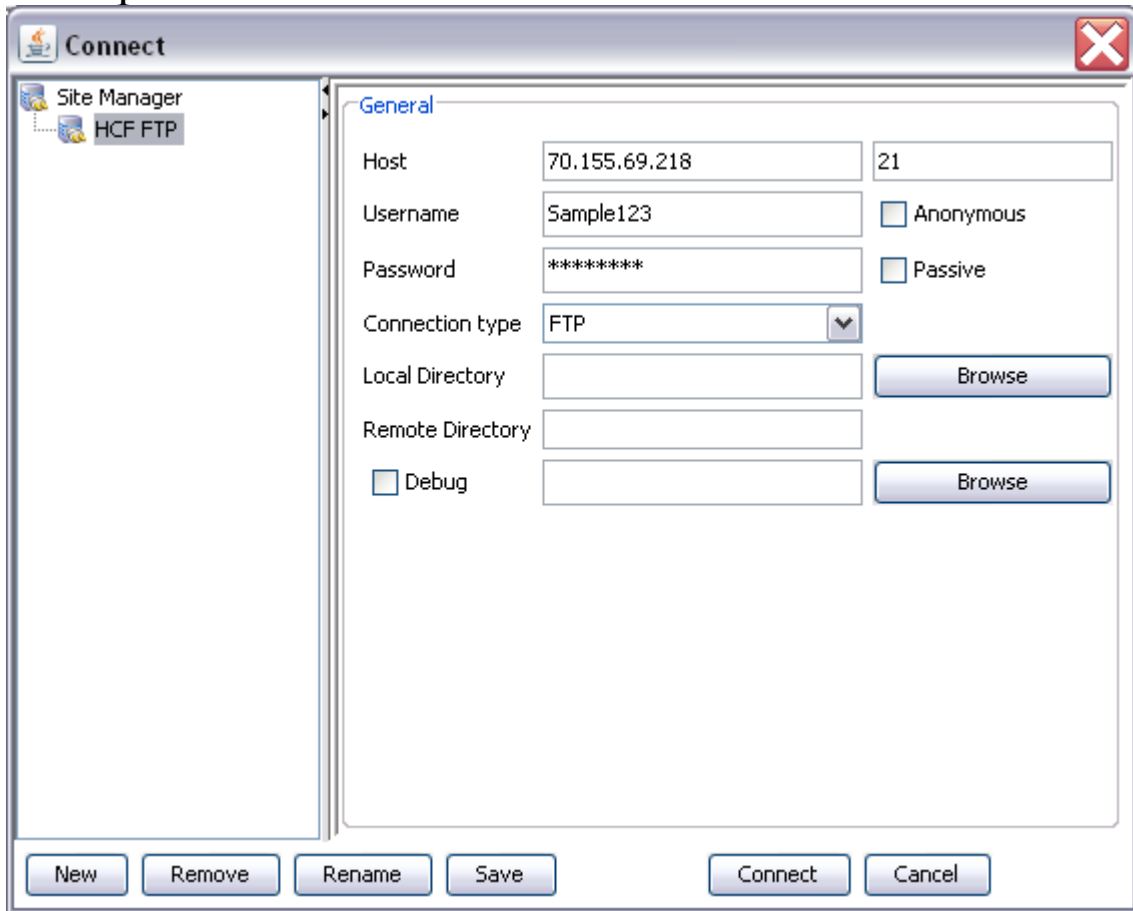
Single left click the box next to Username. This will be given to you by Hand Crafted Framing. Type it in exactly as you see it. If the letter is an uppercase, use uppercase.

Single left click the box next to Password. This will also be given to you by Hand Crafted Framing. Type it in exactly as you see it. If the letter is an uppercase, use uppercase.

Make sure the boxes next to Anonymous and passive are not checked.

All the other areas remain blank.

Example:



Left click the save button.

Left click the connect button.

You are now logged on to the ftp server.

The window on the left is your computer and the window on the right is the ftp server.

Navigate to your images and put them into the folder on the Remote System.